

**Dimensions mm[inch]**



tolerances acc. to DIN ISO 2768-m  
 Toleranzen gem. DIN ISO 2768-m

**Isometric**

Scale 1:5  
 Maßstab 1:5

**CONNECTOR housing**

will be provided only, NOT MOUNTED  
 Steckergehäuse  
 wird beigelegt, NICHT MONTIERT

**TERMINALS/ CONNECTOR**

MOLEX housing 39-01-2021, female  
 MOLEX Gehäuse 39-01-2021, female

**TERMINALS/ CONNECTOR**

MOLEX contacts 39-00-0040  
 MOLEX Kontakte 39-00-0040

**CABLE**

round cable LIYY 2x0,25 mm<sup>2</sup>, grey  
 colour of wires: white and brown  
 Rundkabel LIYY 2x0,25 mm<sup>2</sup>, grau  
 Aderfarben: weiss und braun

**Nut**

M10 (DIN 934)  
 Mutter  
 M10 (DIN 934)

**O-ring BV14853**

EPDM black  
 O-Ring BV14853  
 EPDM schwarz

**Protective tube**

stainless steel 1.4301  
 Schutzrohr  
 Edelstahl 1.4301

**Two-ear clamp**

Zweiohrklemme

**Float MS09-S**

stainless steel  
 specific density approx. 0,8 g/cm<sup>3</sup>  
 Schwimmer MS09-S  
 Edelstahl  
 spezifische Dichte ca. 0,8 g/cm<sup>3</sup>  
 (p/n: 2500000029)

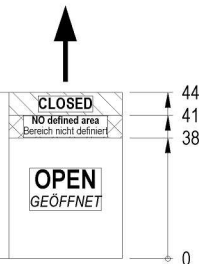
**Marking of magnet**

position in the float  
 Markierung der Magnetposition  
 im Schwimmer

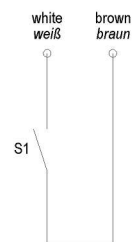


**Switching scale**

measuring  
 direction  
 Messrichtung

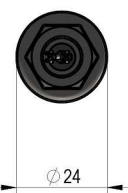


**Schematic**



**Marking**

according to EN60062/factory code  
 gem. EN60062/Fertigungsstätte





Europe: +49 / 7731 8399 0 | Email: info@meder.com  
 USA: +1 / 508 295 0771 | Email: salesusa@meder.com  
 Asia: +852 / 2955 1682 | Email: salesasia@meder.com

Item No.:  
**9556614793**  
 Item:  
**LS05-BV14793**  
**De Dietrich**

*Products for tomorrow...*

Contact data 66/3	Conditions	Min	Typ	Max	Unit
Contact-form		A			
Contact rating	Any DC combination of V & A not to exceed their individual max.'s			10	W
Switching voltage	DC or Peak AC			24	V
Carry current	DC or Peak AC			1	A
Switching current	DC or Peak AC			0,5	A

Special Product Data	Conditions	Min	Typ	Max	Unit
Sensor-resistance	measured with 40% overdrive			300	mOhm
Housing material		stainless steel 1.4301			
Sealing compound		Polyurethan			

Environmental data	Conditions	Min	Typ	Max	Unit
Ambient temperature	specification does not apply to cable	-25		100	°C
safety class	DIN EN 60529	IP67			

Customer side	Conditions	Min	Typ	Max	Unit
connector design		Molex			

Cable specification	Conditions	Min	Typ	Max	Unit
Cable typ		round cable			
Temperature range unmoved		-30		80	°C
Temperature range moved		-20		80	°C
Cable material		PVC			
Cross section		0,25 sq-mm			

General data	Conditions	Min	Typ	Max	Unit
customer / customer number		De Dietrich			