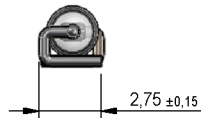
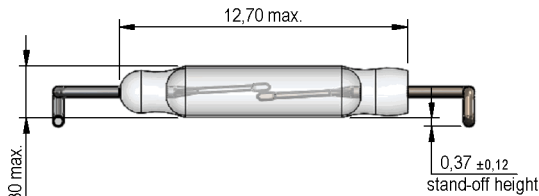


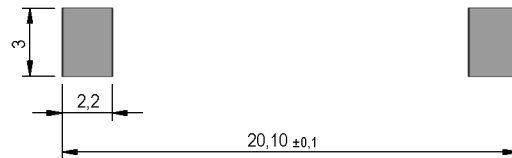
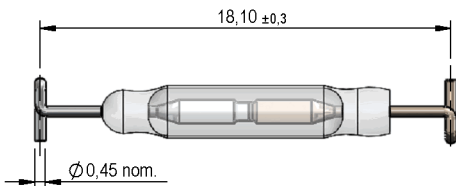
Dimensions mm[inch]
 tolerances according to DIN ISO 2768-m
 Toleranzen gem. DIN ISO 2768-m

Isometric
 Scale 2:1
 Maßstab 2:1

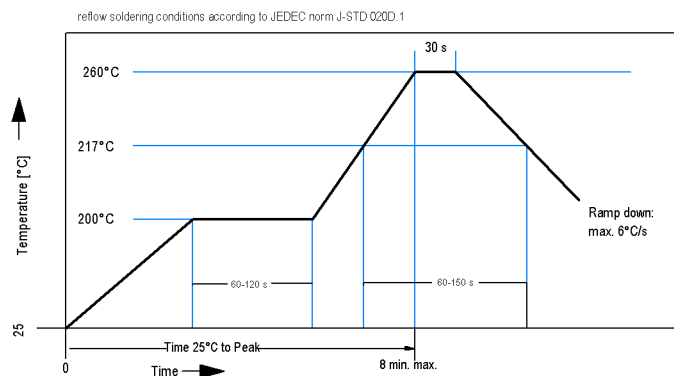


reed switch cut and bent symmetrically to gap
 Reedschalter symmetrisch zur Spaltlage geschitten und gebogen

Recommended PCB Pad Layout

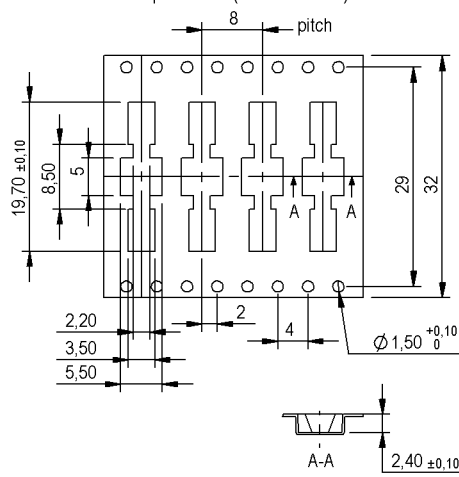


Solder Reflow Profile



Packaging

Tape & Reel (2500 to a Reel)



all dimension in this view are internal and are taken at the bottom of pocket draft angle is 20° except in center area where draft is 3°



Europe: +49 / 7731 8399 0

| Email: info@standexmeder.com

Item No.:

USA: +1 / 508 295 0771

| Email: salesusa@standexmeder.com

9235061015

Asia: +852 / 2955 1682

| Email: salesasia@standexmeder.com

Item:

MK23-501-B-5**Helix**

Magnetic properties	Conditions	Min	Typ	Max	Unit
Pull-In excitation (Reference value)	Reed switch unmodified measured in coil- "define operation"	10		15	AT
Test-Coil	Reed switch unmodified		KMS-01		
Pull-In excitation (modified contact)	Reed switch modified phys. conditioned tolerance +/- 1 AT				AT
Test-Coil	Reed switch modified		KMS-		

Contact data 06/1	Conditions	Min	Typ	Max	Unit
Contact - No.			06/1		
Contact-form			A		
Contact-material			PGM-alloy		
Contact rating	Any DC combination of V & A not to exceed their individual max.'s			10	W
Switching voltage	DC or Peak AC			200	V
Switching current	DC or Peak AC			0,5	A
Carry current	DC or Peak AC			1	A
Contact resistance static	Start value			100	mOhm
Insulation resistance	RH <45 %, 100 V test voltage	10			GOhm
Breakdown voltage	according to EN 60255-5	250			VDC
Operate time incl. bounce				0,5	ms
Release time	measured with no coil excitation			0,1	ms
Capacity	@ 10 kHz across open switch		0,3		pF

Special Product Data	Conditions	Min	Typ	Max	Unit
Reach / RoHS conformity			yes		

Environmental data	Conditions	Min	Typ	Max	Unit
Shock	1/2 sine, duration 11ms, in 3 axis			50	g
Vibration	from 10 - 2000 Hz			20	g
Operating temperature		-40		125	°C
Storage temperature		-50		155	°C
Soldering temperature	wave soldering max. 5 sec.			260	°C

General data	Conditions	Min	Typ	Max	Unit
Packaging			Tape & Reel 2500 pcs.		

Modifications in the sense of technical progress are reserved

Designed at: 01.10.14 Designed by: WKOVACS

Approval at: 06.10.14 Approval by: AWEBER

Last Change at: Last Change by:

Approval at: Approval by:

Version: 01