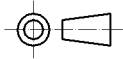
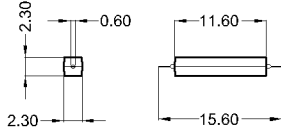


Products for tomorrow...

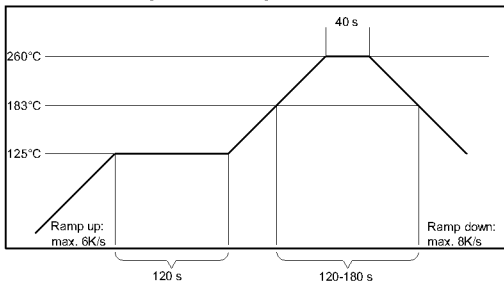
Dimensions



unspecified tolerances $\pm 0.1\text{mm}$
 nicht spezifizierte Toleranzen $\pm 0.1\text{mm}$

Lötvorschrift / soldering information

reflow soldering conditions according to JEDEC norm J-STD-020C

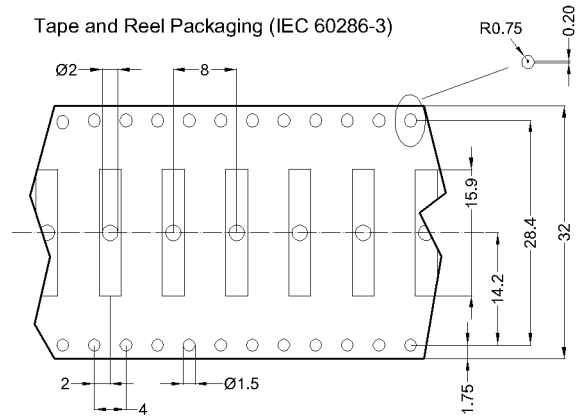


Marking

Sensibility and DateCode
 EN60062



Tape and Reel Packaging (IEC 60286-3)



| Magnetic properties | Conditions | Min | Typ | Max | Unit |
|---------------------------------------|---|--------|-----|-----|------|
| Pull-In | at 20 °C | 32 | | 59 | AT |
| Test equipment | | KMS-11 | | | |
| Pull-In in milliTesla (modified conta | MS150 - phys. caused tolerance +/- 0,1mT | 1,6 | | 2,8 | mT |
| Test equipment | | MS-150 | | | |

| Contact data 87 | Conditions | Min | Typ | Max | Unit |
|---------------------------|--|---------|-----|-----|------|
| Contact-material | Plating thicknesses are proprietary | Rhodium | | | |
| Contact rating | Any DC combination of V & A not to exceed their individual max.'s | | | 10 | W |
| Switching voltage | DC or Peak AC | | | 200 | V |
| Switching current | DC or Peak AC | | | 0,4 | A |
| Contact resistance static | Measured with 40% overdrive Start Value | | | 150 | mOhm |
| Breakdown voltage | according to IEC 255-5 | 230 | | | VDC |

| Special Product Data | Conditions | Min | Typ | Max | Unit |
|----------------------|------------|-------------|-----|-----|------|
| Housing material | | epoxy resin | | | |

| Environmental data | Conditions | Min | Typ | Max | Unit |
|---------------------|-----------------------------|--------------|-----|-----|------|
| Shock | 1/2 sine wave duration 11ms | | | 30 | g |
| Vibration | from 10 - 2000 Hz | | | 20 | g |
| Ambient temperature | | -40 | | 130 | °C |
| Storage temperature | | -50 | | 130 | °C |
| Cleaning | | fully sealed | | | |