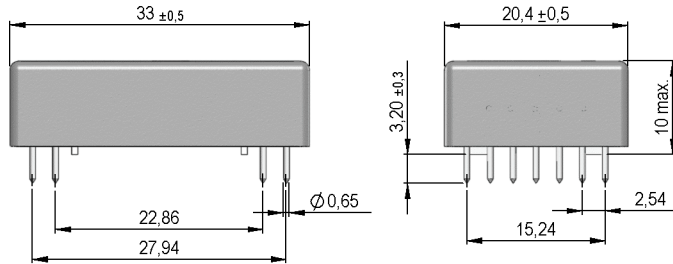
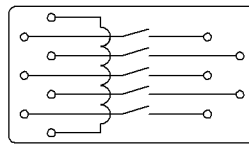


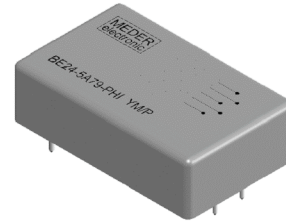
Dimensions mm[inch]
 tolerances acc. to DIN ISO 2768-m
 Toleranzen gem. DIN ISO 2768-m



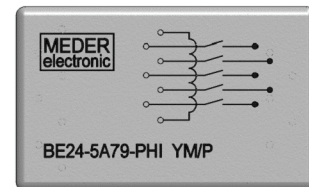
Layout
 Top view
 Draufsicht



Isometric
 Scale 1:1
 Maßstab 1:1



Marking
 according to EN60062/factory code
 gem. EN60062/Fertigungsstätte



| Coil Data at 20 °C | Conditions | Min | Typ | Max | Unit |
|--------------------|------------|------|-----|------|------|
| Coil resistance | | 671 | 745 | 819 | Ohm |
| Coil voltage | | | 24 | | VDC |
| Rated power | | | 773 | | mW |
| Pull-In voltage | | | | 16,8 | VDC |
| Drop-Out voltage | | 1,25 | | | VDC |

| Contact data 79 | Conditions | Min | Typ | Max | Unit |
|------------------------------|---|-------|-----|-------|------|
| Contact rating | Any DC combination of V & A not to exceed their individual max.'s | | | 25 | W |
| Switching voltage | DC or Peak AC | | | 1.000 | V |
| Switching current | DC or Peak AC | | | 1 | A |
| Carry current | DC or Peak AC | | | 2 | A |
| Contact resistance static | Measured with 40% overdrive Start Value | | | 150 | mOhm |
| Insulation resistance | RH <45 %, 100 V test voltage | 100 | | | TOhm |
| Breakdown voltage (20-25 AT) | according to IEC 255-5 | 2.000 | | | VDC |
| Operate time incl. bounce | measured with 40% overdrive | | | 1 | ms |
| Release time | measured with no coil excitation | | | 0,4 | ms |

| Special Product Data | Conditions | Min | Typ | Max | Unit |
|------------------------------------|------------------------------------|-------------------------|-----|-----|-------|
| Insulation resistance Coil/Contact | RH <45%, 200 VDC measuring voltage | 100 | | | TOhm |
| Insulation voltage Coil/Contact | according to IEC 255-5 | 2 | | | kV AC |
| Housing material | | Polycarbonat | | | |
| Sealing compound | | Polyurethan | | | |
| Connection pins | | Copper alloy tin plated | | | |
| Number of contacts | | 5 | | | |
| Contact - form | | A - NO | | | |
| Case colour | | gray | | | |
| Magnetic Shield | | no | | | |
| Reach / RoHS conformity | | yes | | | |



Products for tomorrow...

Europe: +49 / 7731 8399 0 | Email: info@meder.com
USA: +1 / 508 295 0771 | Email: salesusa@meder.com
Asia: +852 / 2955 1682 | Email: salesasia@meder.com

Item No.:
8824579104
Item:
BE24-5A79-PHI

| Environmental data | Conditions | Min | Typ | Max | Unit |
|-----------------------|------------------------------------|-----|-----|-----|--------------|
| Shock | 1/2 sine, duration 11ms, in 3 axis | | | 50 | g |
| Vibration | from 10 - 2000 Hz | | | 20 | g |
| Ambient temperature | | -20 | | 70 | °C |
| Storage temperature | | -40 | | 105 | °C |
| Soldering temperature | wave soldering max. 5 sec. | | | 260 | °C |
| Cleaning | | | | | fully sealed |

| General data | Conditions | Min | Typ | Max | Unit |
|--------------|------------|-----|-----|-----|--|
| Remarks | | | | | Relay with very high insulating resistance |

Modifications in the sense of technical progress are reserved

Designed at: 24.08.09 Designed by: MPOTUZAK
Last Change at: 16.02.11 Last Change by: WKOVACS

Approval at: 03.03.11 Approval by: CRUF
Approval at: Approval by:

Version: 03