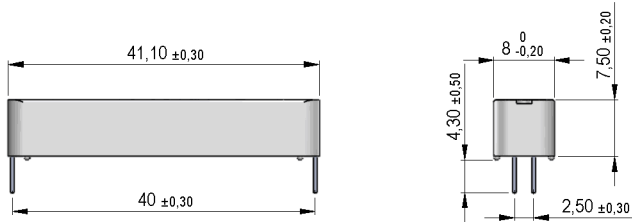


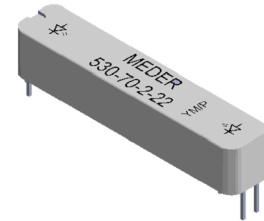
Dimensions mm[inch]

tolerances acc. to DIN ISO 2768-m
Toleranzen gem. DIN ISO 2768-m

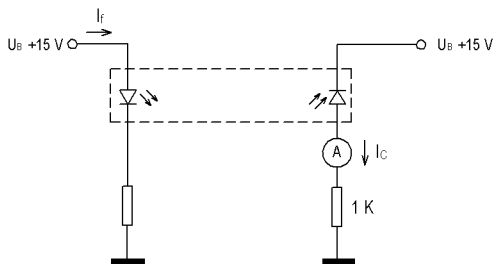


Isometric

Scale 1:2
Maßstab 1:2

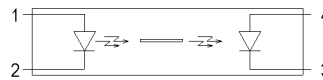


Test circuit



Layout

Top view
Draufsicht



Marking

according to EN60062/factory code
gem. EN60062/Fertigungsstätte



Elect. Coupler Characteristic	Conditions	Min	Typ	Max	Unit
Current Transfer Ratio Ic/If CTR	If=10 mA	0,8		1,7	%
Cut-Off Frequency Fco			100		kHz
Insulation Resistance Input/Output	RH 45%	1			TOhm
Insulation Voltage Input/Output Uio	release current max. 10 µA	22.000			VDC
Coupling capacitance Cc			0,1		pF
Creeping Distance		39			mm
Air Path Input/Output		39			mm
Insulation Distance Emitter-Detecto		22,6			mm

Maximum Ratings Emitter	Conditions	Min	Typ	Max	Unit
Forward Voltage Uf	If=10 mA			2,3	V
DC Forward Current If				50	mA
Reverse Voltage Ur	Ir=100 microA			3	V
Surge Forward current Ifs	t<=10 ms			1.000	mA
Power Dissipation Ptot				120	mW

Maximum Ratings Detector	Conditions	Min	Typ	Max	Unit
Power Dissipation Ptot				100	mW

Special Product Data	Conditions	Min	Typ	Max	Unit
Case colour				white	
Housing material				PBT glass fibre reinforced	
Reach / RoHS conformity				yes	

Environmental data	Conditions	Min	Typ	Max	Unit
Ambient Temperature Ta		-40		85	°C
Storage temperature		-40		100	°C
Soldering temperature	wave soldering max. 5 sec.			260	°C
Shock	1/2 sine, duration 11ms, in 3 axis			50	g
Vibration	from 10 - 2000 Hz			20	g
Washability				fully sealed	