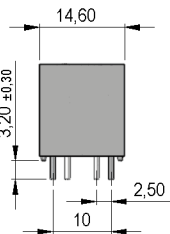
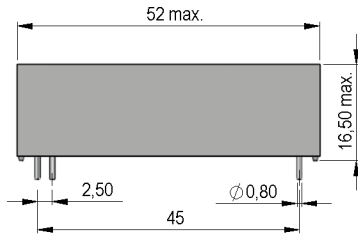


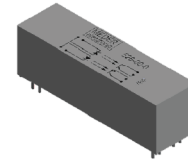
**Dimensions mm[inch]**

tolerances acc. to DIN ISO 2768-m  
Toleranzen gem. DIN ISO 2768-m

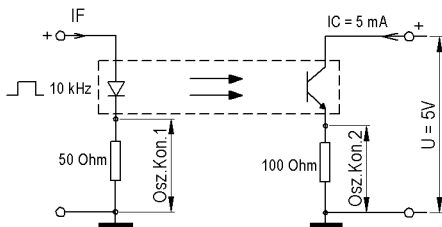


**Isometric**

Scale 1:2  
Maßstab 1:2

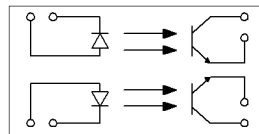


**Test circuit**



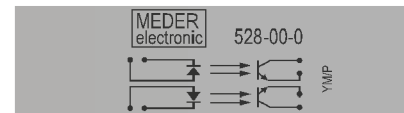
**Layout**

Top view  
Draufsicht



**Marking**

according to EN60062/factory code  
gem. EN60062/Fertigungsstätte



Elect. Coupler Characteristic	Conditions	Min	Typ	Max	Unit
Turn-on Time 1 Ton	If=10mA,Uce=5V,RL=100 Ohm		5,5		µS
Turn-Off Time 1 Toff	If=10mA,Uce=5V,RL=100 Ohm		4,2		µS
Current Transfer Ratio Ic/If CTR	If=10 mA	0,9			
Cut-Off Frequency 1 Fco	If=10mA,Uce=5V,RL=100 Ohm		50		kHz
Insulation Resistance Input/Output	RH 45%	1.000			GOhm
Insulation Voltage Input/Output Uio		10.000			VDC
Coupling capacitance Cc			0,4		pF
Creeping Distance		42			mm
Air Path Input/Output		42			mm
Insulation Distance Emitter-Detecto		5			mm

Maximum Ratings Emitter	Conditions	Min	Typ	Max	Unit
Forward Voltage Uf	If=10 mA			1,5	V
DC Forward Current If				100	mA
Reverse Voltage Ur	Ir=100 microA			5	V
Surge Forward current Ifs	t<=10 ms			500	mA
Current Reduction		0,73			mA/°C
Power Dissipation Ptot				170	mW

Maximum Ratings Detector	Conditions	Min	Typ	Max	Unit
Collector-Emitter Voltage Vce				70	VDC
Emitter-Collector Voltage Vec				5	VDC
Collector Dark Current Iceo	Uce=20V,R=1MOhm,If=0mA			0,2	µA
Collector Peak Current Icm				100	mA
Collector Current Ic				50	mA
Power Reduction		0,91			mW/°C
Power Dissipation Ptot				100	mW

Special Product Data	Conditions	Min	Typ	Max	Unit
Connection pins					cu-alloy tinned
Case colour					grey
Housing material					Plastic
Reach / RoHS conformity					yes
Sealing compound					Polyurethan



Europe: +49 / 7731 8399 0

| Email: info@standexmeder.com

Item No.:

USA: +1 / 508 295 0771

| Email: salesusa@standexmeder.com

**5217800000**

Asia: +852 / 2955 1682

| Email: salesasia@standexmeder.com

Item:

**528-00-0**

Environmental data	Conditions	Min	Typ	Max	Unit
Ambient Temperature Ta		-40		85	°C
Storage temperature		-40		100	°C
Soldering temperature	wave soldering max. 5 sec.			260	°C
Shock	1/2 sine, duration 11ms, in 3 axis			50	g
Vibration	from 10 - 2000 Hz			20	g
Washability					fully sealed

Modifications in the sense of technical progress are reserved

Designed at: 26.11.13    Designed by: WKOVACS

Approval at: 13.01.14

Approval by: SSCHNECKENBURGER

Last Change at: 08.07.14    Last Change by: DSTASTNY

Approval at: 16.07.14

Approval by: KOLBRICH

Version: 05