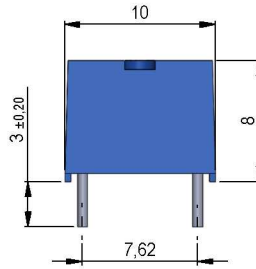
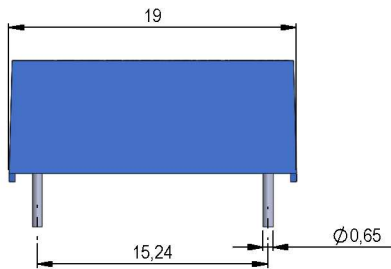


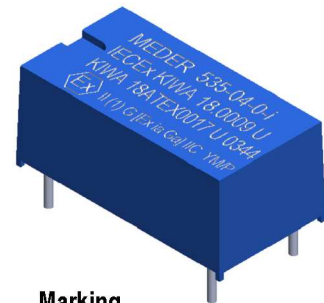
Dimensions mm[inch]

tolerances acc. to DIN ISO 2768-m
Toleranzen gem. DIN ISO 2768-m

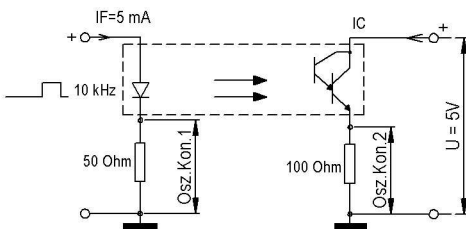


Isometric

Scale 2:1
Maßstab 2:1

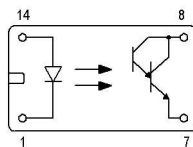


Test circuit



Layout

Top view
Draufsicht



Marking

according to EN60062/factory code
gem. EN60062/Fertigungsstätte



Elect. Coupler Characteristic	Conditions	Min	Typ	Max	Unit
Turn-on Time 1 Ton	If=10mA,Uce=5V,RL=100 Ohm		19,5		µS
Turn-Off Time 1 Toff	If=10mA,Uce=5V,RL=100 Ohm		212		µS
Output Voltage Uol	If=5 mA		1,2		V
Current Transfer Ratio Ic/If CTR	If=1 mA	7			
Cut-Off Frequency 1 Fco	If=10mA,Uce=5V,RL=100 Ohm		2		kHz
Insulation Resist. Input/Output Rio	RH 45%	10			TOhm
Insulation Voltage Input/Output Uio		4.000			VDC
Coupling capacitance Cc			0,3		pF
Creeping Distance		14,5			mm
Air Path Input/Output		14,5			mm

Maximum Ratings Emitter	Conditions	Min	Typ	Max	Unit
Forward Voltage Uf	If=10 mA			1,5	VDC
DC Forward Current If				100	mA
Reverse Voltage Ur	Ir=100 microA			5	VDC
Surge Forward current Ifs	t<=10 ms			500	mA
Current Reduction		0,73			mA/°C
Power Dissipation Ptot				170	mW

Maximum Ratings Detector	Conditions	Min	Typ	Max	Unit
Collector-Emitter Voltage Vce				32	VDC
Emitter-Collector Voltage Vec				5	VDC
Collector Dark Current Iceo	Uce=20V,R=1MOhm,If=0mA			20	µA
Collector-Emitter Saturation Voltag	If=10 mA, Ic=1 mA			0,75	VDC
Collector Peak Current Icm				150	mA
Collector Current Ic				50	mA
Power Reduction		0,91			mW/°C
Power Dissipation Ptot				100	mW



Europe: +49 / 7731 8399 0

| Email: info@standexmeder.com

USA: +1 / 508 295 0771

| Email: salesusa@standexmeder.com

Asia: +852 / 2955 1682

| Email: salesasia@standexmeder.com

Item No.:

5217304000

Item:

535-04-0-i

Special Product Data	Conditions	Min	Typ	Max	Unit
Connection pins					cu-alloy tinned
Housing material					Plastic
Reach / RoHS conformity					yes
Sealing compound					Polyurethan
Approval					KIWA 18ATEX0017 U
Approval					IECEX KIWA 18.0009U

Environmental data	Conditions	Min	Typ	Max	Unit
Ambient Temperature Ta		-40		85	°C
Storage temperature		-40		100	°C
Soldering temperature	wave soldering max. 5 sec.			260	°C
Washability					fully sealed

Modifications in the sense of technical progress are reserved

Designed at: 14.04.09 Designed by: KSCHIELENSKI Approval at: 20.08.12 Approval by: CRUF

Last Change at: 21.09.18 Last Change by: SSCHNECKENBURGER Approval at: 07.11.18 Approval by: DSTASTNY

Version: 13