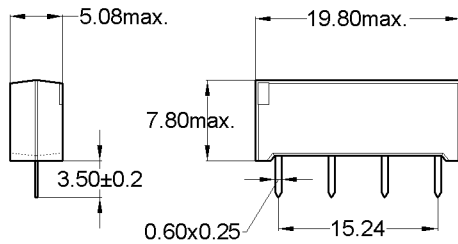
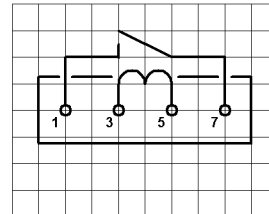


Dimensions

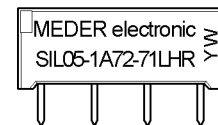


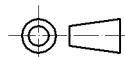
Layout 71L Pitch 2.54 / Top View



Marking

Type - Layout
 Production-Code
 EN60062



 unspecified tolerances ± 0.1mm
 nicht spezifizierte Toleranzen ± 0.1mm

| Coil Data at 20 °C | Conditions | Min | Typ | Max | Unit |
|--------------------|------------|------|-------|-------|------|
| Coil resistance | | 900 | 1.000 | 1.100 | Ohm |
| Coil voltage | | | 5 | | VDC |
| Rated power | | | 25 | | mW |
| Pull-In voltage | | | | 3,8 | VDC |
| Drop-Out voltage | | 0,75 | | | VDC |

| Contact data 66/1 | Conditions | Min | Typ | Max | Unit |
|----------------------------|---|------|-----|-----|------|
| Contact-form | | A-NO | | | |
| Contact rating | Any DC combination of V & A not to exceed their individual max.'s | | | 10 | W |
| Switching voltage | DC or Peak AC | | | 100 | V |
| Switching current | DC or Peak AC | | | 0,5 | A |
| Carry current | DC or Peak AC | | | 1 | A |
| Contact resistance static | Measured with 40% overdrive Start Value | | | 150 | mOhm |
| Contact resistance dynamic | Maximum value 1,5 ms after excitation Start Value | | | 200 | mOhm |
| Insulation resistance | RH <45 %, 200 V test voltage | 1 | | | GOhm |
| Breakdown voltage (>20 AT) | according to IEC 255-5 | 200 | | | VDC |
| Operate time incl. bounce | measured with 40% overdrive | | | 0,7 | ms |
| Release time | measured with no coil excitation | | | 0,1 | ms |
| Capacitance | @ 10 kHz across open switch | | 0,3 | | pF |

| Special Product Data | Conditions | Min | Typ | Max | Unit |
|------------------------------------|-------------------------------|-------------------------|-----|-----|-------|
| Insulation resistance Coil/Contact | RH <45%, 200 VDC test voltage | 100 | | | GOhm |
| Insulation voltage Coil/Contact | according to IEC 255-5 | 1,5 | | | kV DC |
| Housing material | | epoxy resin | | | |
| Connection pins | | Copper alloy tin plated | | | |

| Environmental data | Conditions | Min | Typ | Max | Unit |
|-----------------------|-----------------------------|--------------|-----|-----|------|
| Shock | 1/2 sine wave duration 11ms | | | 50 | g |
| Vibration | from 10 - 2000 Hz | | | 20 | g |
| Ambient temperature | | -20 | | 70 | °C |
| Storage temperature | | -35 | | 95 | °C |
| Soldering temperature | wave soldering max. 5 sec. | | | 260 | °C |
| Cleaning | | fully sealed | | | |