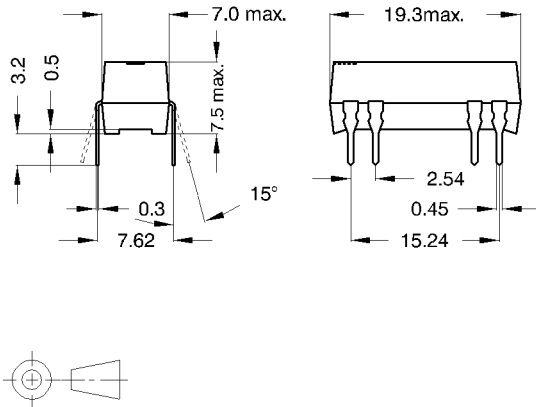
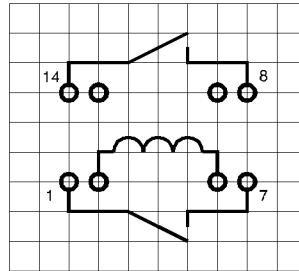


**preliminary datasheet**

 Dimensions (Tolerance  $\pm 0.1$ )


Layout 21L Pitch 2.54/Top View



Marking

 Typ Layout  
 Production Code  
 EN 60062

 MEDER electronic  
 DIP12-2A75-21L YW

Coil datas at 20 °C	Conditions	Min	Typ	Max	Unit
Coil resistance		180	200	220	Ohm
Coil voltage			12		VDC
Rated power			720		mW
Thermal resistance	max. Relay temperature = operating temperature + self heating		87		K/W
Pull-In voltage				8,4	VDC
Drop-Out voltage		1,8			VDC

Contact data 75	Conditions	Min	Typ	Max	Unit
Contact-material					
Contact rating	Any DC combination of V & A not to exceed their individual max.'s			10	W
Switching voltage (<31 AT)	DC or Peak AC			500	V
Switching current	DC or Peak AC			0,5	A
Carry current	DC or Peak AC			1	A
Contact resistance static	Measured with 40% overdrive Start Value			200	mOhm
Contact resistance dynamic	Maximum value 1,5 ms after excitation Start Value			200	mOhm
Insulation resistance	RH <45 %, 100 V test voltage	10			GOhm
Breakdown voltage (<20 AT)	according to IEC 255-5	600			VDC
Operate time incl. bounce	measured with 40% overdrive			0,5	ms
Release time	measured with no coil excitation			0,1	ms
Capacity	@ 10 kHz		0,4		pF

Special Product Data	Conditions	Min	Typ	Max	Unit
Insulation resistance Coil/Contact	RH <45%, 100 V test voltage	100	1.000		GOhm
Insulation voltage Coil/Contact	according to IEC 255-5	1,5			kV DC
Housing material			epoxy resin		
Connection pins			CuFe tin plated		

Environmental data	Conditions	Min	Typ	Max	Unit
Shock	1/2 sine wave duration 11ms			50	g
Vibration	from 10 - 2000 Hz			20	g
Ambient temperature		-20		50	°C
Storage temperature		-35		95	°C
Soldering temperature	max. 5 sec			260	°C
Cleaning			fully sealed		

Modifications in the sense of technical progress are reserved

 Designed at: 10.07.06    Designed by: KMUELLER  
 Last Change at: 10.07.06    Last Change by: KMUELLER

 Approval at:                      Approval by:  
 Approval at:                      Approval by:

Version: 01