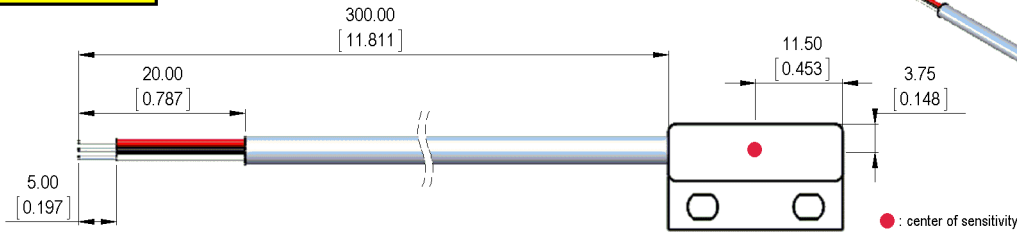


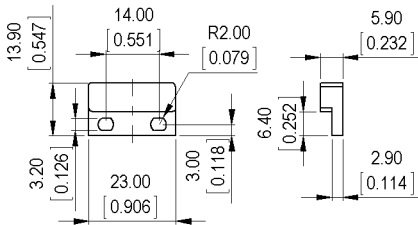


Dimensions mm[inch]
 tolerances acc. to DIN ISO 2768-m
 Toleranzen gem. DIN ISO 2768-m

Isometric
 Scale 1:2
 Maßstab 1:2



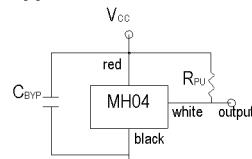
Housing



Cable

round cable UL/CSA LIYY AWG 26, grey
 color of wires: red, black, white

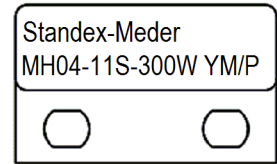
Typical External Circuit



Add external pull-up resistor (R_{PU}) for sinking output between V_{CC} and Output
 Add external bypass capacitor (C_{BYP}) close to the sensor to reduce external noise as needed

Marking

according to EN60062/factory code
 gem. EN60062/Fertigungsstätte



Terminals/Connector

Ends tinned
 red: V_{CC}
 black: Ground
 white: Output

Magnetische Eigenschaften	Bedingung	Min	Soll	Max	Einheit
			Switch		
			Unipolar		
Output On	T=25C and VDD=12V		35		Gauss
Output Off	T=25C and VDD=12V		25		Gauss
	T=25C and VDD=12V		10		Gauss

Technische Daten	Bedingung	Min	Soll	Max	Einheit
Betriebsspannung		3		24	VDC
				4	mA
Betriebstemperatur		-40		85	°C
Lagertemperatur		-60		105	°C

Kabelspezifikation	Bedingung	Min	Soll	Max	Einheit
Kabeltyp			Rundkabel		
Adernzahl			3		
Litzenaufbau			AWG 26	7x0,16	
Isolation Einzeladern			PVC		
Adernfarben			red, black, white		
Isolation Kabelmantel			PVC		
Mantelfarbe	DIN 47100		grau		
Außendurchmesser Kabelmantel			3.8		mm

Allgemeine Daten	Bedingung	Min	Soll	Max	Einheit
Anzugsdrehmoment	Schraube M3 ISO 1207 Scheibe ISO 7089			0.5	Nm
Montagehinweis		decreased switching distances when mounted near iron			
Montagehinweis		magnetically conductive screws must not be used			
Gehäusefarbe		weiß			
Vergussmasse		Polyurethan			
Bemerkung		direct custom inquiries to sales@standexmeder.com			