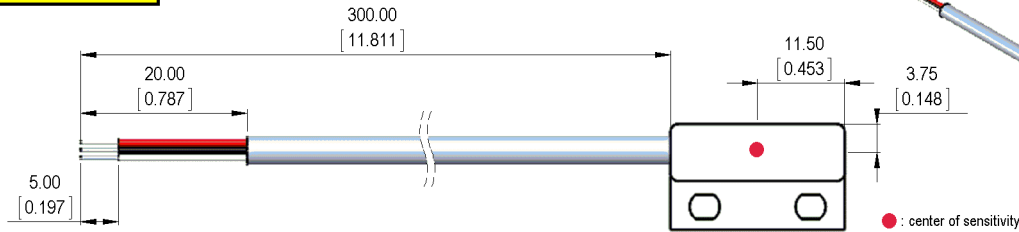


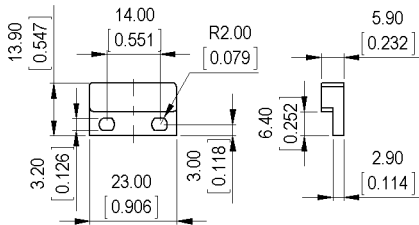


**Dimensions mm[inch]**  
 tolerances acc. to DIN ISO 2768-m  
 Toleranzen gem. DIN ISO 2768-m

**Isometric**  
 Scale 1:2  
 Maßstab 1:2



**Housing**



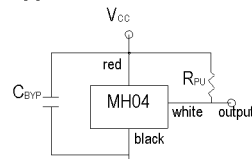
**Cable**

round cable UL/CSA LIYY AWG 26, grey  
 color of wires: red, black, white

**Terminals/Connector**

Ends tinned  
 red: V<sub>CC</sub>  
 black: Ground  
 white: Output

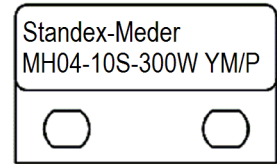
**Typical External Circuit**



Add external pull-up resistor (R<sub>PU</sub>) for sinking output between V<sub>CC</sub> and Output  
 Add external bypass capacitor (C<sub>BY</sub>) close to the sensor to reduce external noise as needed

**Marking**

according to EN60062/factory code  
 gem. EN60062/Fertigungsstätte



Magnetische Eigenschaften	Bedingung	Min	Soil	Max	Einheit
		Micropower Switch			
		Omnipolar			
Output On	T=25°C and VDD=2.75V		37		Gauss
Output Off	T=25°C and VDD=2.75V		31		Gauss
			6		Gauss

Technische Daten	Bedingung	Min	Soil	Max	Einheit
Betriebsspannung		2.5	2.75	3.5	VDC
				2	mA
Betriebstemperatur		-40		85	°C
Lagertemperatur		-60		105	°C

Kabelspezifikation	Bedingung	Min	Soil	Max	Einheit
Kabeltyp		Rundkabel			
Adernzahl		3			
Litzenaufbau		AWG 26 7x0,16			
Isolation Einzeladern		PVC			
Adernfarben		red,black,white			
Isolation Kabelmantel		PVC			
Mantelfarbe	DIN 47100	grau			
Außendurchmesser Kabelmantel			3.8		mm

Allgemeine Daten	Bedingung	Min	Soil	Max	Einheit
Anzugsdrehmoment	Schraube M3 ISO 1207 Scheibe ISO 7089			0.5	Nm
Montagehinweis		decreased switching distances when mounted near iron			
Montagehinweis		magnetically conductive screws must not be used			
Gehäusefarbe		weiß			
Vergussmasse		Polyurethan			
Bemerkung		direct custom inquiries to sales@standexmeder.com			